

Classic Elite Yarns

SONG HAT



SONG

Cotton and wool combine in this luxurious yarn in a sophisticated palette. Perfect for year round wear, babies to adults, in cables, lace, colorwork or plain stockinette. Song does it all beautifully!

SKILL LEVEL

Intermediate

SIZES

Adult S (M/L). Shown in size M/L.

FINISHED MEASUREMENTS

16¾ (19¼)", circumference unstretched

YARN

Song by **Classic Elite Yarns**

(50% cotton, 50% wool; 50 g = approx 110 yards)
2 balls 2555 Sangria

NEEDLES

Circular knitting needle (16") and dpn in size US 6 (4 mm) **or size to obtain gauge.**

OTHER MATERIALS

Stitch marker

GAUGE

20 sts and 26 rows = 4" in St st, blocked. **Take time to save time, check your gauge.**

Song Hat © 2017 Classic Elite Yarns • Web-Letter #514 • for more information visit classiceliteyarns.com/webletter

ravelry.com/yarns/brands/classic-elite-yarns [facebook.com/ClassicEliteYarns](https://www.facebook.com/ClassicEliteYarns) twitter.com/CEYarns blog.classiceliteyarns.com

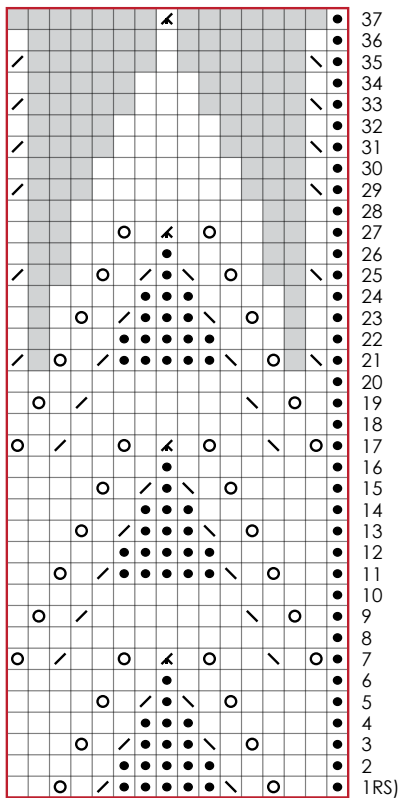
This pattern is specifically for private use only. All commercial uses involving reproduction of this pattern or duplication of this piece are prohibited

Classic Elite Yarns



Eyelet Chart

(multiple of 16 sts dec'd to 2 sts)



- k
- p
- yo
- k2tog
- ssk
- sk2p
- no stitch
- patt rep

ABBREVIATIONS

approx: approximately

BOR: beginning of rnd

CO: cast on

dec('d): decrease(d)

dpn: double pointed needles

k: knit

k2tog: knit 2 sts together (1 st dec'd)

p: purl

p2tog: purl 2 sts together (1 st dec'd)

pm: place marker

rep(s): repeat(s)

rnd(s): round(s)

sk2p: Slip 1 st knitwise, from the LH needle to the RH needle, k2tog, pass slipped st over knit st created by k2tog (2 sts dec'd).

ssk (slip, slip, knit) Slip 2 sts, 1 at a time, knitwise to the RH needle; insert tip of LH needle into the fronts of the two slipped sts and use RH needle to knit them together (1 st dec'd).

st(s): stitch(es)

yo: yarn over (1 st increased)

PATTERN STITCHES

2 x 2 Rib (multiple of 4 sts)

All rnds: *P1, k2, p1; rep from *.

Stockinette Stitch (St st)

All rnds: Knit.

HAT

With circular needle, CO 84 (96) sts. Join to work in the rnd, being careful not to twist sts. Pm for BOR.

Work in 2 x 2 Rib for 1¼".

Knit 1 rnd.

Inc rnd: *Yo, k2; rep from * – 126 (144) sts.

Work 9 (11) rnds in St st and inc 2 (0) sts on last rnd – 128 (144) sts.

Work Eyelet chart rnds 1-37, decreasing as indicated and changing to dpn when necessary – 16 (18) sts.

Last rnd: *P2tog; rep from * – 8 (9) sts.

Break yarn leaving a long tail and thread tail through all sts.

Pull up tightly and fasten off.